

Extracting SMC Configuration Data

1 Purpose

The purpose of this technical bulletin is to demonstrate how to extract the configuration data from ScanMaster Controller (SMC).

2 Download FileZilla

Download Filezilla from the website: <https://filezilla-project.org/>

3 Setup FileZilla

Run the setup for Filezilla and follow the Filezilla setup instructions for your version of Windows.

4 Connecting Your Controller to a PC

4.1 Apply power to the controller

Before trying to extract the configuration data from the controller, connect the controller to power and a PC.

Please refer to page 16 of the [SMC Hardware Reference Manual](#) on how to apply power to the controller.

Note: Access to our application notes, software downloads, setup tools, controller hardware, and technical bulletins requires that you log in. If you need new credentials to log into the Customer Download site, please contact your regional engineering support to request the login credentials.

4.2 Connect your controller to the PC Ethernet connection

Connect one end of an Ethernet cable from a PC to the controller.

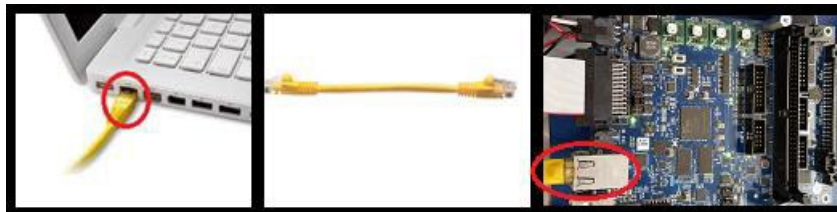


Figure 1 - Connect an Ethernet Cable from PC to the SMC Controller

5 Connecting to the ScanMaster Controller via FTP

Follow the procedure below to connect to the SMC via FTP:

1. Open FileZilla.
2. Enter host IP address for the SMC (Static address default 192.168.100.20)
3. Enter Username: root
4. Enter Password : SMCAdmin
5. Press 'Quickconnect' button

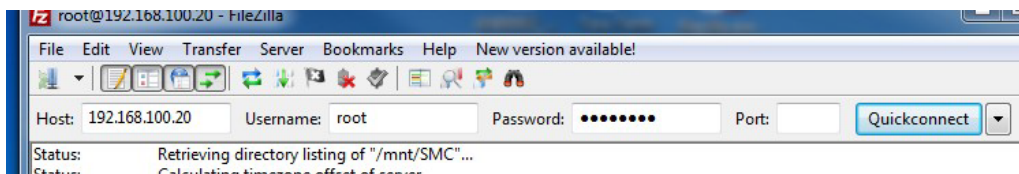
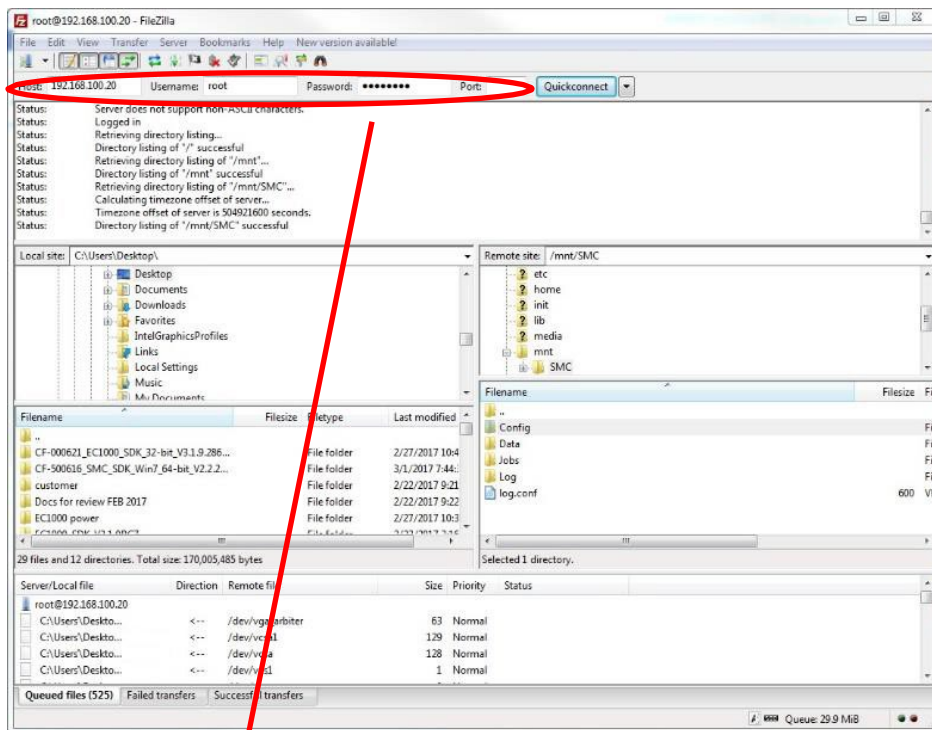


Figure 2 - FileZilla Logged into SMC

6 Download 'Config' Folder to Desktop or Other Local Directory

Follow the procedure below to download the 'Config' folder to your Desktop or other local directory of your choice:

1. In FileZilla, select 'Desktop' or other local directory under 'Local site' to save the configuration data (left side of FileZilla).

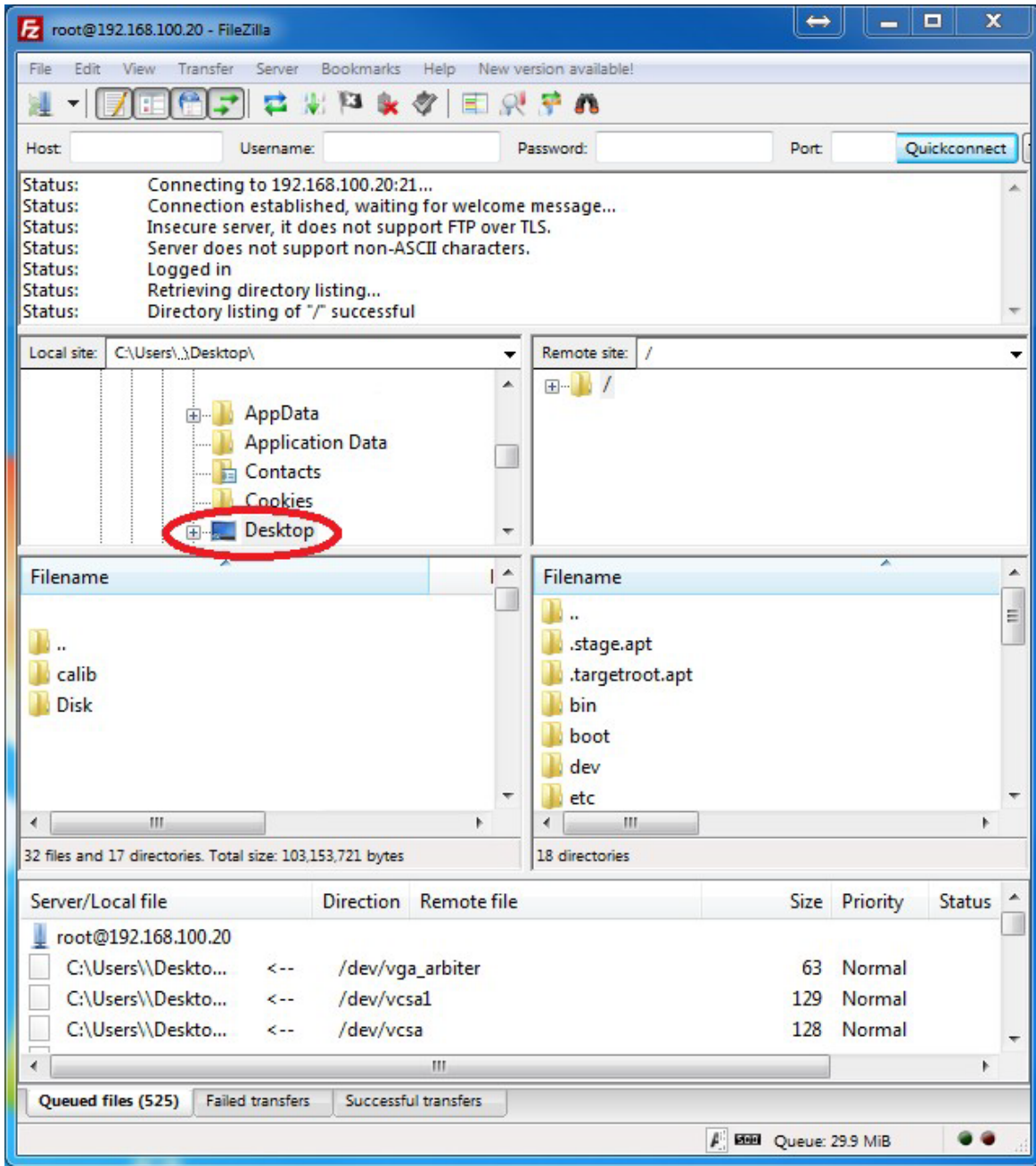


Figure 3 - 'Desktop' Selected in FileZilla

2. In FileZilla, select 'mnt/SMC' folder under 'Remote site' (right side of FileZilla).

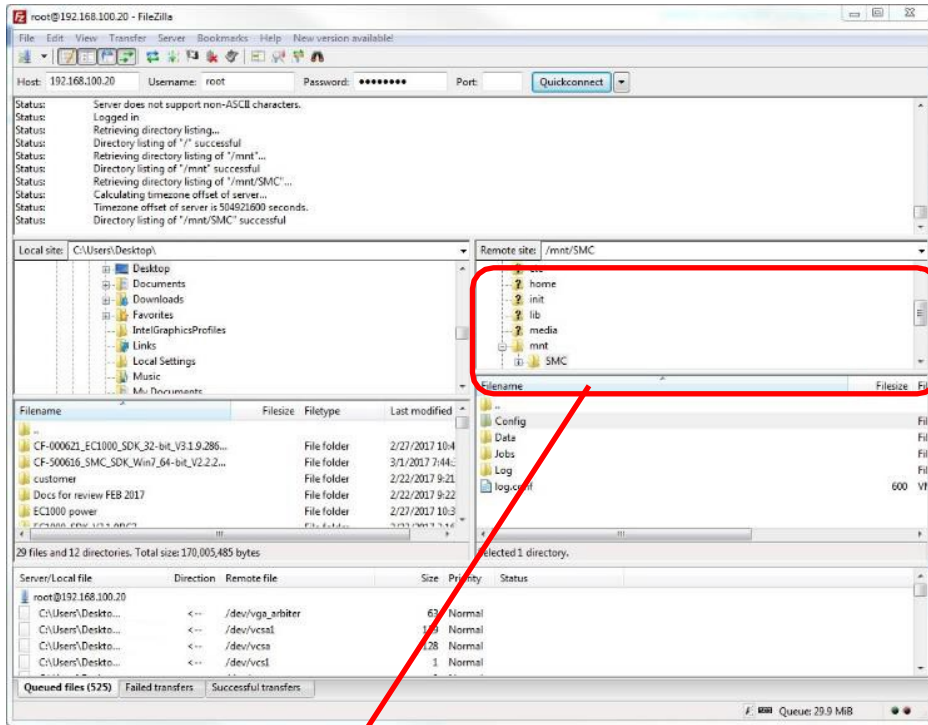


Figure 4 - 'SMC' Folder Selected in Filezilla

3. Select the 'Config' folder in the lower window under 'Remote site' in FileZilla as shown in Figure 5.

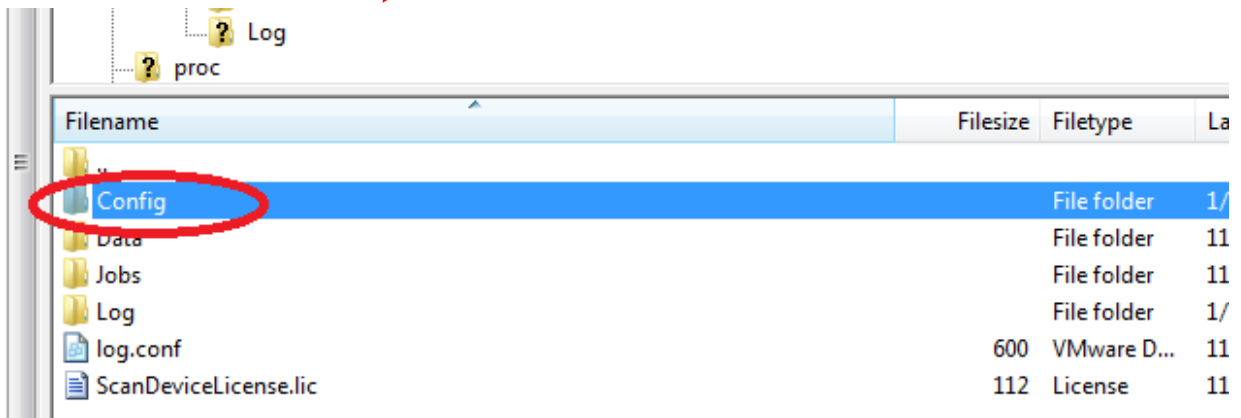
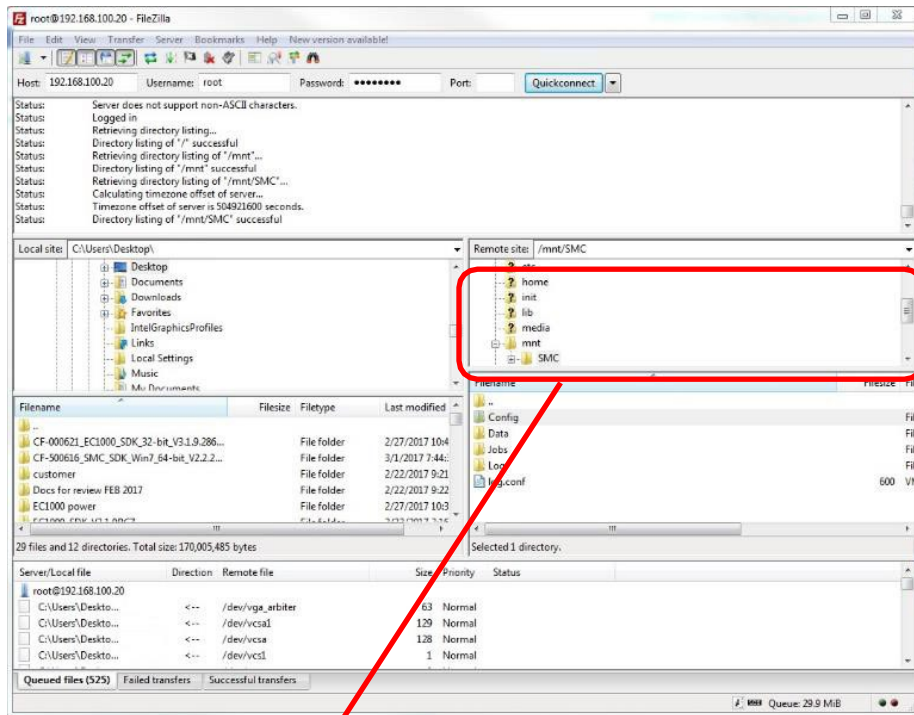


Figure 5 - 'Config' Folder Selected in FileZilla

4. Right-mouse click on the 'Config' folder and select 'Download'.

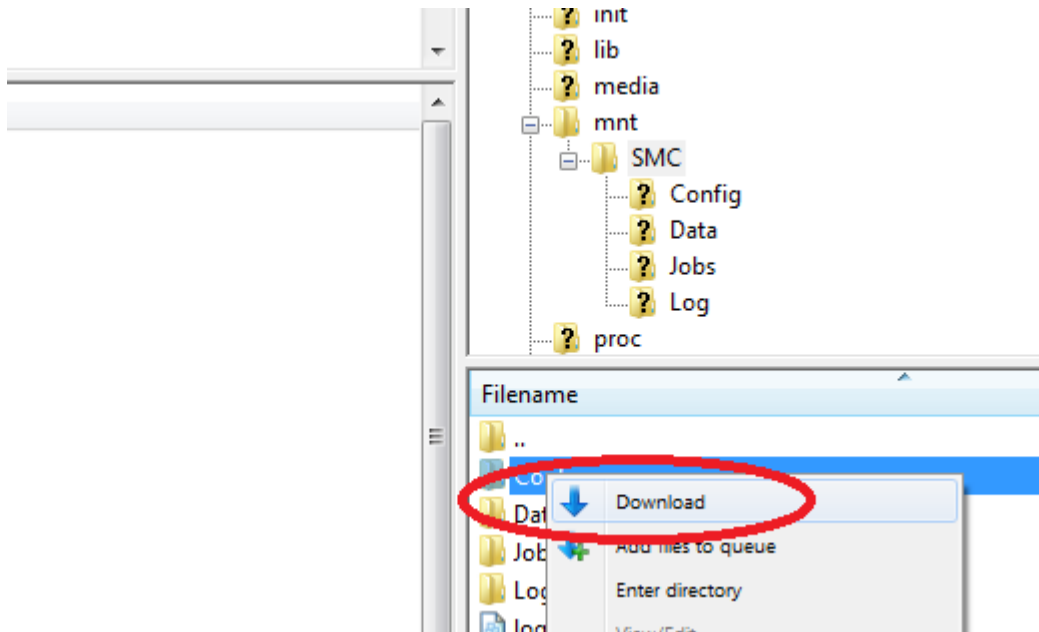


Figure 6 - 'Config' Folder Selected for Download in Filezilla



Figure 7 - 'Config' Folder Downloaded from Filezilla